

## EDM-2000-D243A

Electro-dynamic Vibration Testing System (Air Cooled)

### Features

- Double Field Magnetic Circuit Design
- Advanced shaker trunnion isolation design
- Dedicated dynamic auto-centering control
- Latest SiC-FET technique based power amplifier, modularized power module with higher switching frequency range, SNR and more safety
- Smarter remote control on power amplifier thru Ethernet connectivity
- System MTBF > 6,000 Hours
- Flexible vibration isolation design for foundation based installation or foundation-free based installation by pneumatic isolators
- Operational head expander, slip table, chamber thermal barrier
- Operational motor-driven shaker rotating mechanism (for slip table)

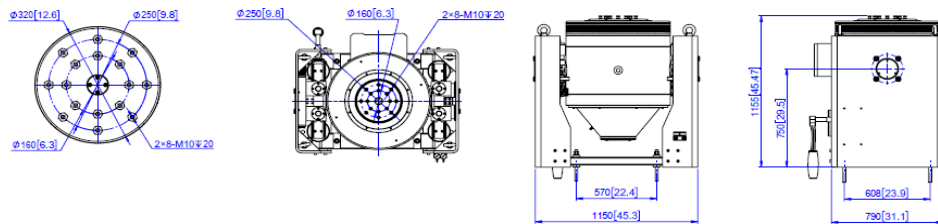


### Performances

Shaker Model	EDM-2000
Rated Sine Force	20 kN
Random Force (rms)	14 kN
Shock Force	40 kN
Usable Frequency Range	5-3,000 Hz (1)
Max. Displacement (p-p)	51 mm
Max. Velocity	2.0 m/s
Max. Acceleration (sine, bare table)	981 m/s <sup>2</sup>
Max. Static Payload	300 kg
Armature Diameter	320 mm
Effective Moving Elements Mass	20 kg
Armature Fundamental Resonance	2,400 Hz (Bare table, ±5%)
Body Suspension Natural Frequency	<3 Hz
Overturning Movement	>500 Nm
Magnetic Flux Leakage	<5 mT (2)
Load Attachment Points	16xM10
Armature Insert Pattern	8x160 mm, 8x250 mm
Dimension (W×D×H, without slip table)	1150×910×1155 mm
Weight (without slip table)	2,250 kg
<b>System Working Environment</b>	
Temperature	0~40℃
Humidity (RH, non-condensing)	10~90%
Power Supply Requirement	40 kVA, 3-phase 380V/50Hz (3)
Compressed Air Requirement	0.6 Mpa

Power Amplifier Model	VSA-D243A
Amplifier Type	Digital Switching
Power Module	SiC-FET
Computer Connectivity	Ethernet+Software
Rated Power Output	24 kVA
Max. Output Voltage	120 Vrms
Max. Output Current	210 Arms
Switching Frequency	400 kHz
Signal to Noise Ratio	>70 dB
Conversion Efficiency	>93%
Frequency Response	±1.5 dB (5-5,000Hz)
Harmonic Distortion	<0.8% (5-5,000Hz)
Interlocks and Protection	voltage, current, travel, temperature cooling, module failure, etc
Dimension (W×D×H)	600×940×1965 mm
Weight	600 kg
<b>Air Blower Model</b>	
<b>PBL-W20</b>	
Blower Power	7.5 kW
Air Flow, Pressure	0.66 m <sup>3</sup> /s, 0.075 kgf/cm <sup>2</sup>
Hose Diameter	200 mm
Dimension (W×D×H)	830×680×1340 mm
Weight	162 kg
<b>Accessories (standard)</b>	
Wires/Hose Length	6 m (4)
Accessories	Center Ruler, Dust Cover, Installation Tools

### Outline Drawing



### Notes

- (1) This is sine working frequency defined as per standard ISO 5344. Sine working frequency can start from 2Hz, and Random working frequency can start from 1Hz.
- (2) Magnetic flux leakage 1 mT is available if degaussing coil is equipped.
- (3) Power supply can be customized as per standard of different countries/area.
- (4) Length can be customized as per customer requirement.

Specifications subject to change without prior notice.

Econ Technologies Co., Ltd

Building 4, 1418-41 Moganshan Rd. Hangzhou 310015, China

Tel/Fax: +86-571-88174609, www.econ-group.com, salesintl@econ-group.com

Vibration Testing, Measurement, and Calibration